

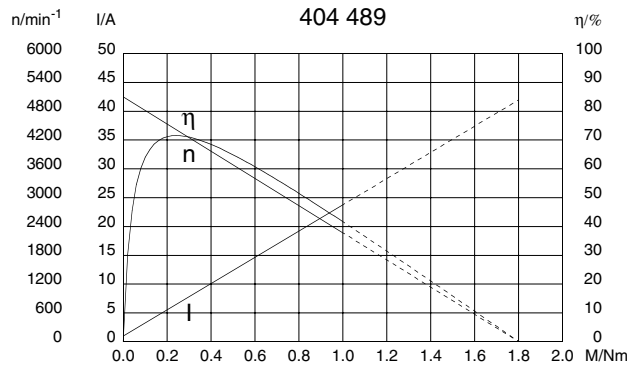
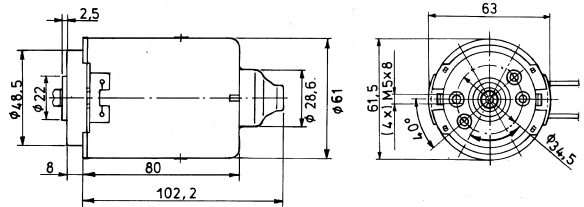
# Series 0272 (GMK)

## Motor type 404 489

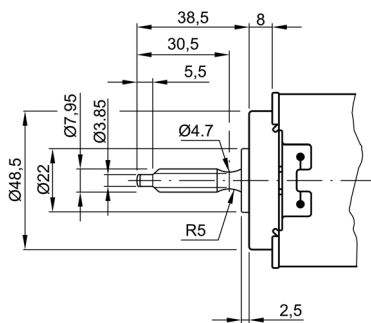
### Technical Data

Rated voltage	$U_N$	[Volt]	24
No-load speed	$n_0$	[min <sup>-1</sup> ]	5100
Nominal torque	$M_N$	[Nm]	0,12
ON time	%		
ON	[min]		
Starting torque	$M_A$	[Nm]	1,80
Gear ratio	$i$		--
Armature resistance, 2 bars	R	[m $\Omega$ ]	365,00
4 bars	R	[m $\Omega$ ]	240,00
Armature inductance, 2 bars	L	[mH]	0,85
4 bars	L	[mH]	0,80
Armature load inertia	$J_R$	[kgm <sup>2</sup> ] $\times 10^{-6}$	76,00
Gear wheel material			
Hall IC			
Pulses/rev. drive shaft			
Output channels			
Remarks	1 start worm		
Enclosure class			IP 30
Weight		[kg]	0,880

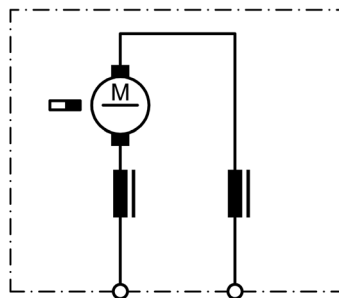
### 0272 A



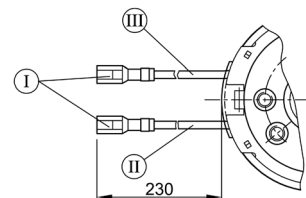
### W 220



### S 27



### K 180



- I Blade terminal receptacles  
2,8 x 0,8 DIN 46 247
- II green
- III red