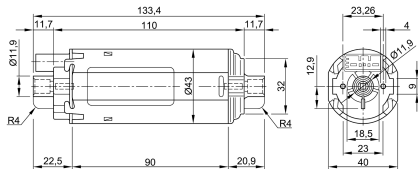


# Series GMP

## Motor type 404 744

Design Data	
Commutation	brushed
Direction of rotation	bidirectional
Bearing Type	A:Sleeve - B:Sleeve

**0220 F**



Performance data		
Nominal Voltage [V]	$U_N$	12
Nominal Torque [Nm]	$M_N$	0,10
Nominal Speed [ $\text{min}^{-1}$ ]	$n_N$	2.025
Nominal Power [W]	$P_N$	21,2
Nominal current [A]	$I_N$	0,0
Nominal force [kN]	$F_N$	0,00
Duty cycle		s3

Sensor data	
Pulses	1
Output channels	1

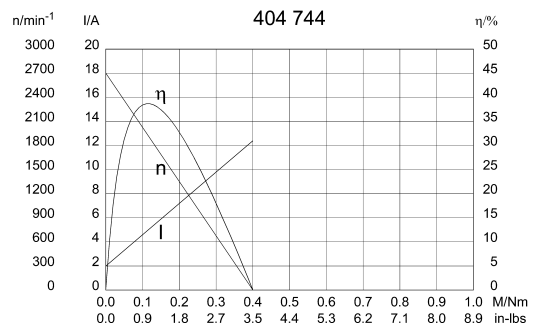
Other data	
Gear ratio	
Gear wheel material	
Suppression components	2,5 $\mu$ H, 47nF
Enclosure class	IP 40
Weight [kg]	0,560

Remarks:

### Motor picture

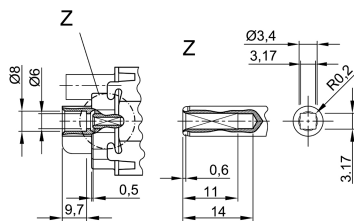


### Characteristic Curves

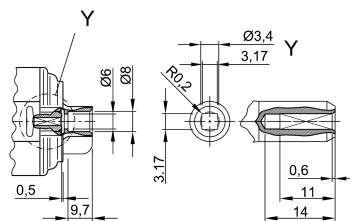


### Output shaft drawing (W), Wiring diagrams (S) and Connector layout (K)

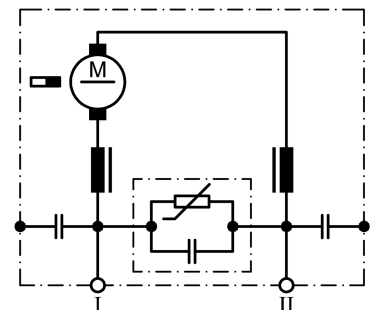
#### W 266



#### W 267



#### S 86



I Terminal 1  
II Terminal 5

