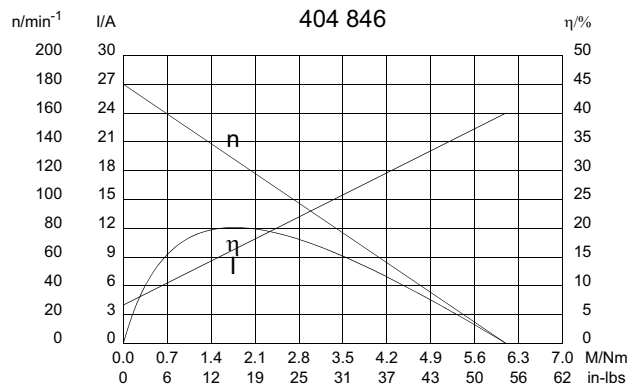
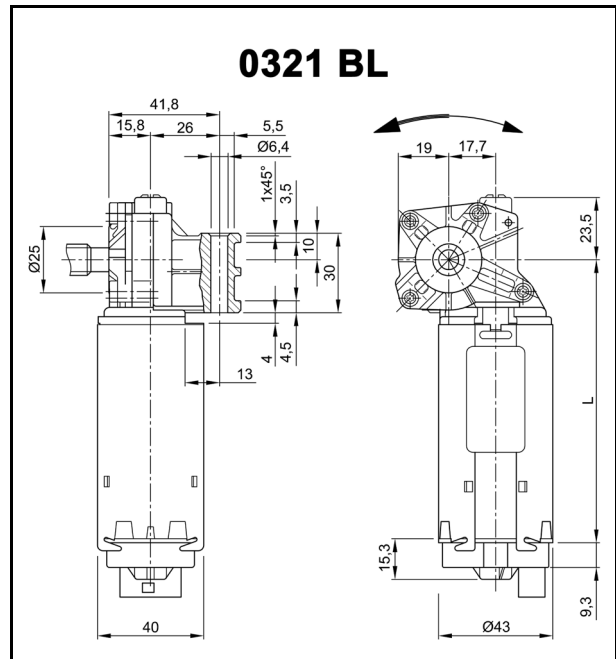


# Series 0321 (GMPS)

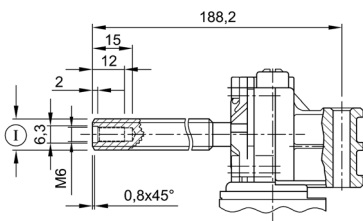
## Motor type 404 846

### Technical Data

Rated voltage	$U_N$ [Volt]	12
No-load speed	$n_0$ [ $\text{min}^{-1}$ ]	180
Nominal torque	$M_N$ [Nm]	1,50
ON time	%	10
ON	[min]	
Starting torque	$M_A$ [Nm]	6,10
Gear ratio	$i$	29/1
Armature resistance, 2 bars	$R$ [ $\text{m}\Omega$ ]	
4 bars	$R$ [ $\text{m}\Omega$ ]	
Armature inductance, 2 bars	$L$ [mH]	
4 bars	$L$ [mH]	
Armature load inertia	$J_R$ [ $\text{kgm}^2$ ] $\times 10^{-6}$	
Gear wheel material	plastic	
Hall IC		X
Pulses/rev. drive shaft		29
Output channels		2
Remarks	$L = 116\text{mm}$ ; 1 start worm	
Enclosure class		IP 40
Weight	[kg]	0,670

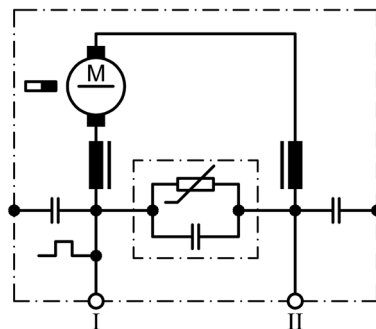


### W 288



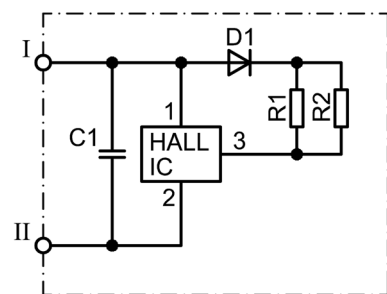
I Shaft 7/16-8 STUB ACME RH

### S 93



I Terminal 1  
II Terminal 5

### S 85

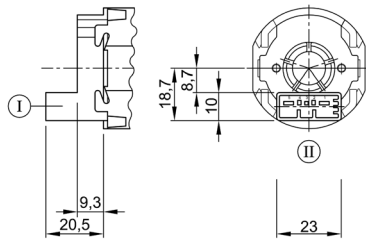


I Terminal 4, Hall-IC +  
II Terminal 2, Hall-IC -

# Series 0321 (GMPS)

Motor type 404 846

**K 220**



- I Terminal housing 5-pole  
TYCO C-208-15621 (Z)
- II Mating connector TYCO 1379217-3  
+ TYCO 1379218-2

Notes: