

# Series GML

## Motor type 404 966

Design Data	
Commutation	Brushed
Direction of rotation	Bi-directional
Bearing type	A:Ball - B:Sleeve

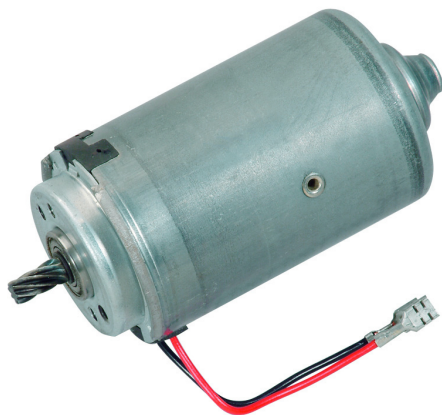
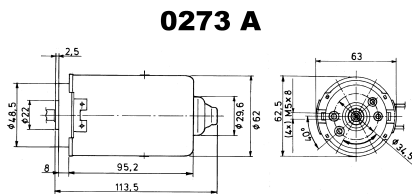
Performance data		
Rated voltage [V]	$U_N$	12
Nominal torque [Nm]	$M_N$	0.30
No-load speed [ $\text{min}^{-1}$ ]	$n_0$	3,730.0
Nominal power [W]	$P_N$	99.2
Nominal current [A]	$I_N$	16.0
Nominal force [kN]	$F_N$	0.00
Duty cycle	s1	

Sensor data	
Pulses	0
Output channels	0

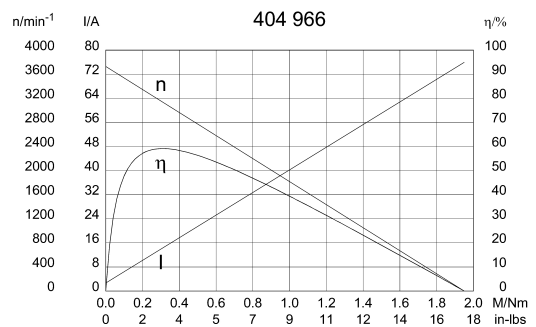
Other data	
Gear ratio	
Gear wheel material	
Suppression components	5 $\mu$ H, 10nF
Enclosure class	IP 30
Weight [kg]	1.100

Remarks:

### Motor picture

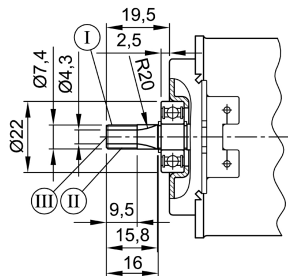


### Characteristic curves

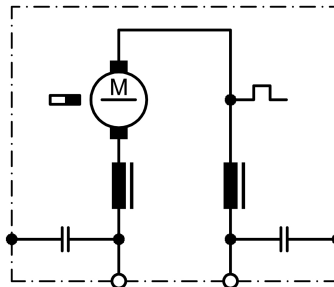


### Output shaft drawing (W), Wiring diagrams (S) and Connector layout (K)

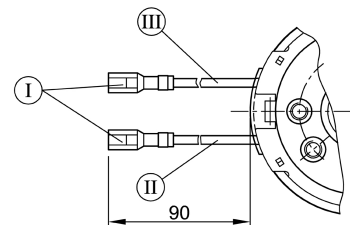
**W 325**



**S 74**



**K 317**



no of starts 7, lead angle 20°, pressure angle 20°, module 0,7, pitch 2,1991 mm (0,087"), induction hardened surface,

I Receptacle for tabs 6,3 x 0,8  
G&H 35040.213.011  
II red  
III green