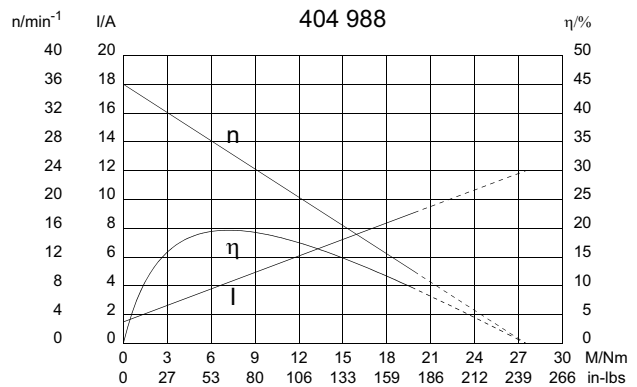
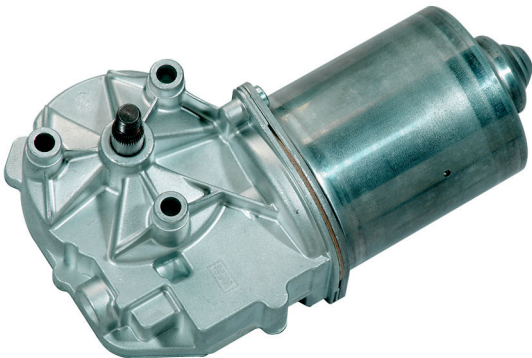
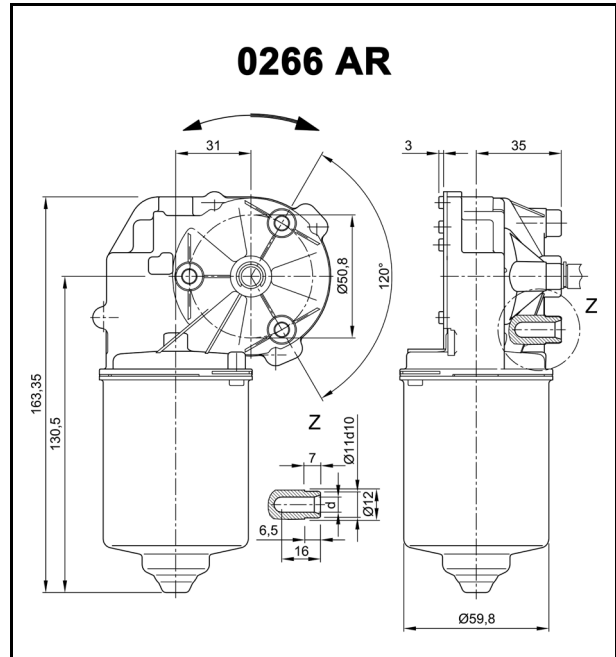


# Series 0266 (DCK31)

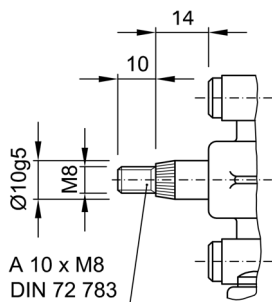
Motor type 404 988

## Technical Data

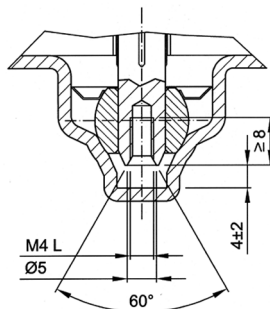
Rated voltage	$U_N$	[Volt]	24
No-load speed	$n_0$	[min <sup>-1</sup> ]	36
Nominal torque	$M_N$	[Nm]	4,00
ON time		%	
ON		[min]	
Starting torque	$M_A$	[Nm]	27,50
Gear ratio	$i$		69/1
Armature resistance, 2 bars	$R$	[mΩ]	
4 bars	$R$	[mΩ]	
Armature inductance, 2 bars	$L$	[mH]	
4 bars	$L$	[mH]	
Armature load inertia	$J_R$	[kgm <sup>2</sup> ] × 10 <sup>-6</sup>	
Gear wheel material		plastic	
Hall IC			X
Pulses/rev. drive shaft			69
Output channels			1
Remarks	d = for thread-forming screw	M6	DIN ISO 965-2
Enclosure class			IP 30
Weight		[kg]	1,210



### W 205

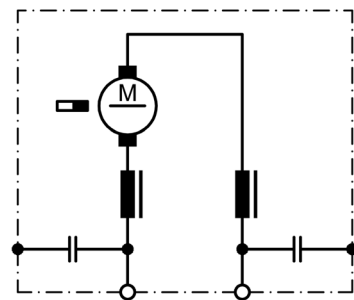


### W 197



! Left-hand thread

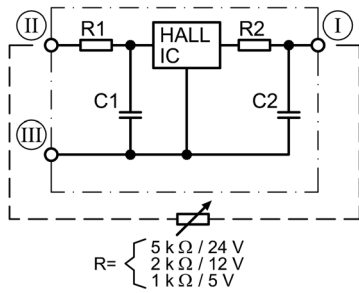
### S 30



# Series 0266 (DCK31)

Motor type 404 988

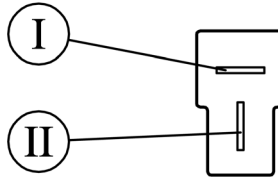
## S 124



$$R = \begin{cases} 5 \text{ k}\Omega / 24 \text{ V} \\ 2 \text{ k}\Omega / 12 \text{ V} \\ 1 \text{ k}\Omega / 5 \text{ V} \end{cases}$$

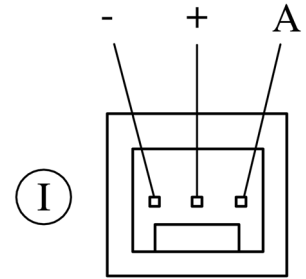
- I Terminal 3, A
- II Terminal 4, +
- III Terminal 5, -

## K 320



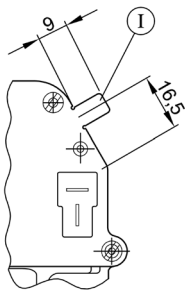
- I Blade terminals 6.3 x 0.8  
DIN 46 244
- II Mating connector: Tyco 180907  
with sleeve AMP 925603

## K 326



- I Mating connector: Panduit CE100 F22 - 03

## K 321



- I Ground connection  
Blade terminal 6.3 x 0.8 DIN 46 244

Notes: