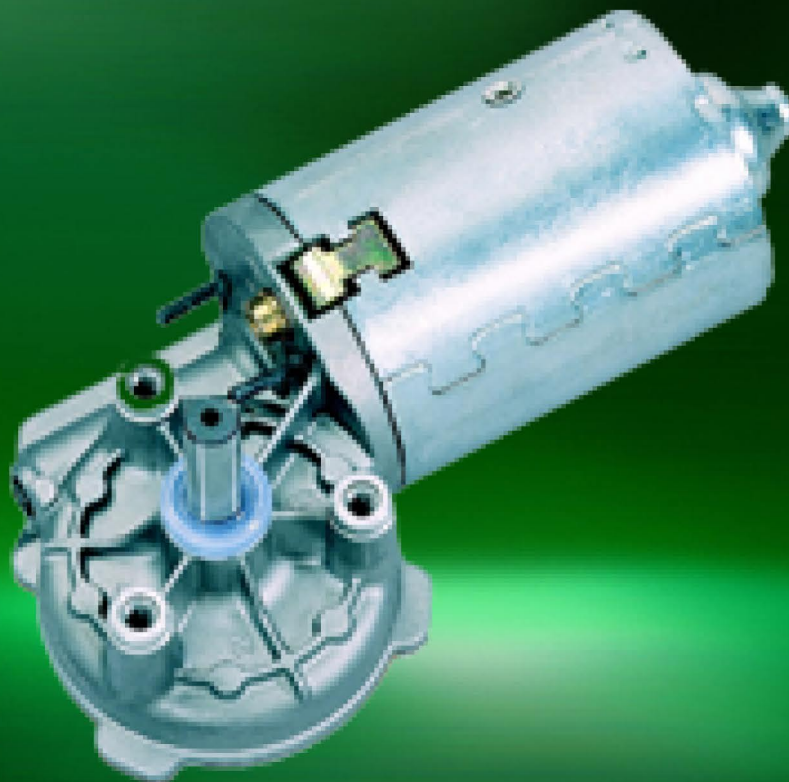


- Information
- GMK · GML
- GMP
- GMAG
- GMP1
- GMPS
- GMPD
- GMPG
- SWMP
- DCK31
- DCK35
- SW2L
- SWNV
- SWMG
- SWMK**

# SWMK

As 12-volt and 24-volt motor with Interference suppression and hall sensors



## Technical description

Motor housing	Sheet steel deep drawn & protected against corrosion
Magnetic field	Permanent magnet
Type of transmission	Worm gear transmission
Transmission housing	Zinc die casting
Gearwheel material	Plastic, metal
Transmission lubrication	Grease, permanent lubrication
Mechanical interface	Drive shaft
Electrical interface	Plug
Sensor	Optional
Thermal protection	Optional
Interference suppression	Optional

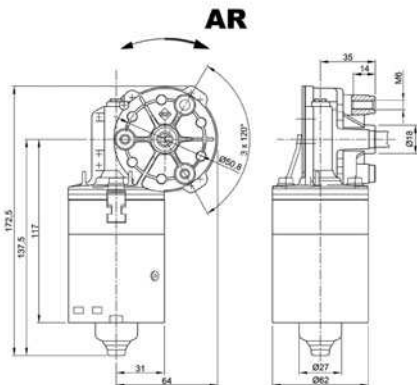
## Applications

- Industry**
- Garage door and door opener, pumps, lubricating technology, household devices, linear drives
- Automobile**
- Tailgate adjustment

# Series SWMK

## Motor type 402 600

Design Data	
Commutation	Brushed
Direction of rotation	Bi-directional
Bearing type	



Performance data		
Rated voltage [V]	$U_N$	24
Nominal torque [Nm]	$M_N$	4.00
No-load speed [ $\text{min}^{-1}$ ]	$n_0$	50.0
Nominal power [W]	$P_N$	17.7
Nominal current [A]	$I_N$	2.5
Nominal force [kN]	$F_N$	0.00
Duty cycle		s1

Sensor data	
Pulses	0
Output channels	0

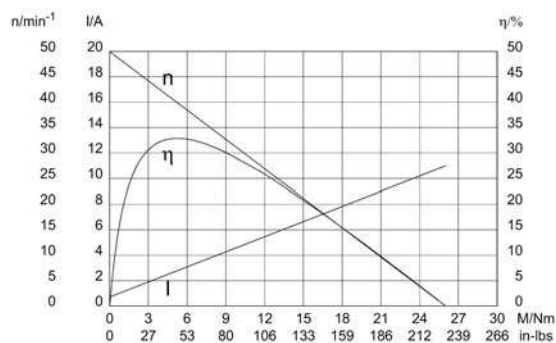
Other data	
Gear ratio	55/1
Gear wheel material	Plastic
Suppression components	
Enclosure class	IP30
Weight [kg]	1.200

Remarks:

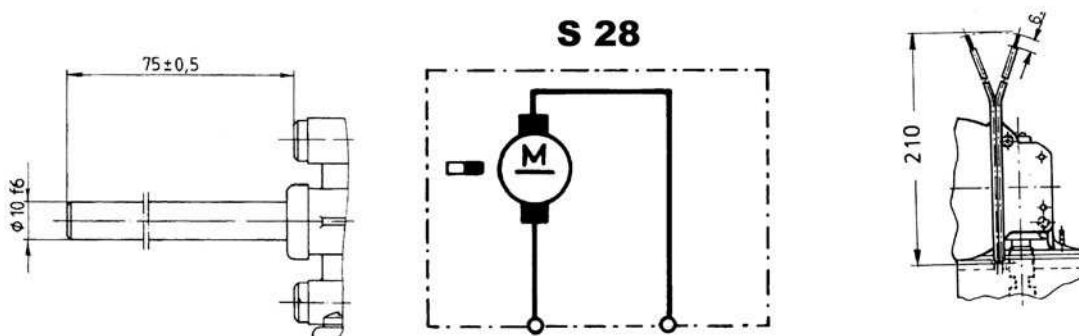
### Motor picture



### Characteristic curves



### Output shaft drawing (W), Wiring diagrams (S) and Connector layout (K)

















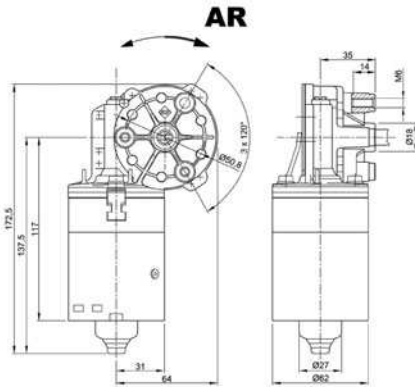




# Series SWMK

## Motor type 403 790

Design Data	
Commutation	Brushed
Direction of rotation	Bi-directional
Bearing type	



Performance data		
Rated voltage [V]	$U_N$	24
Nominal torque [Nm]	$M_N$	2.50
No-load speed [ $\text{min}^{-1}$ ]	$n_0$	21.0
Nominal power [W]	$P_N$	4.87
Nominal current [A]	$I_N$	1.0
Nominal force [kN]	$F_N$	0.00
Duty cycle		s1

Sensor data	
Pulses	0
Output channels	0

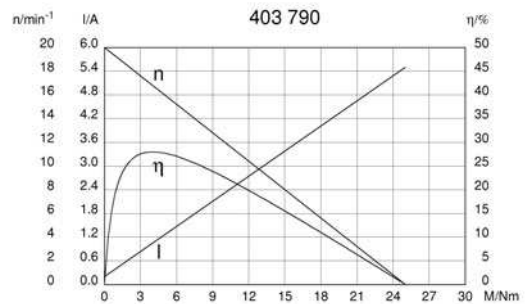
Other data	
Gear ratio	69/1
Gear wheel material	Plastic
Suppression components	4.7 $\mu$ H, 1 $\mu$ F
Enclosure class	IP30
Weight [kg]	1.200

Remarks:

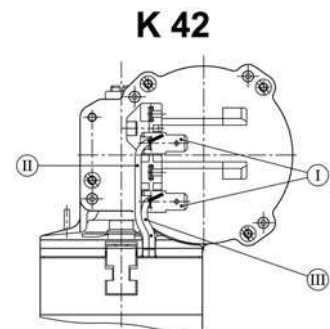
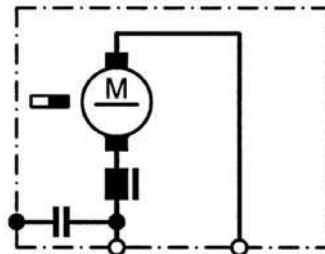
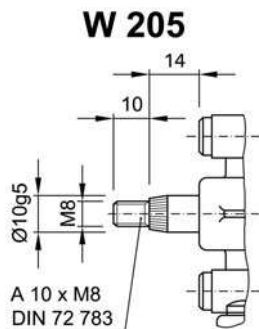
### Motor picture



### Characteristic curves



### Output shaft drawing (W), Wiring diagrams (S) and Connector layout (K)



- I Blade terminal ends  
6,3 x 0,8 DIN 46 244
- II green
- III red

# Series SWMK

## Motor type 404 203

Design Data	
Commutation	Brushed
Direction of rotation	Bi-directional
Bearing type	

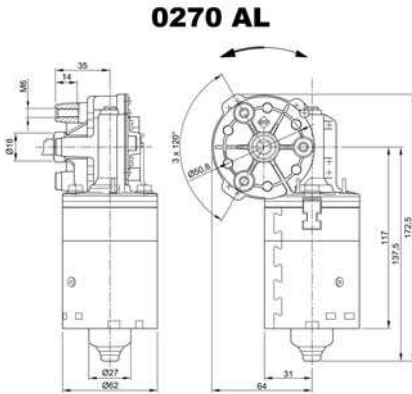
Performance data		
Rated voltage [V]	$U_N$	24
Nominal torque [Nm]	$M_N$	1.00
No-load speed [ $\text{min}^{-1}$ ]	$n_0$	264.0
Nominal power [W]	$P_N$	23.2
Nominal current [A]	$I_N$	4.0
Nominal force [kN]	$F_N$	0.00
Duty cycle		s1

Sensor data	
Pulses	10.25
Output channels	1

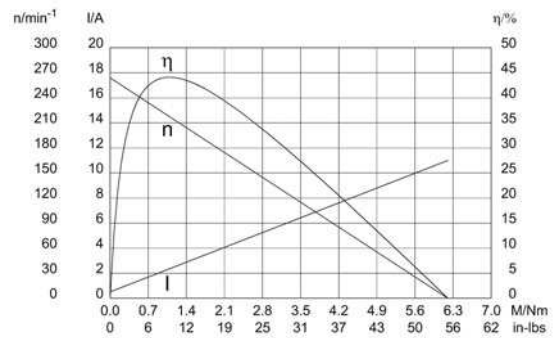
Other data	
Gear ratio	41/4
Gear wheel material	Plastic
Suppression components	
Enclosure class	IP30
Weight [kg]	1.200

Remarks:

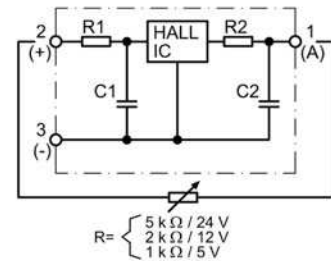
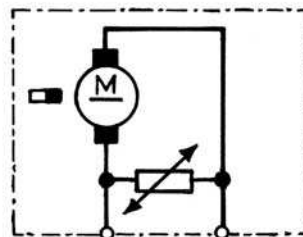
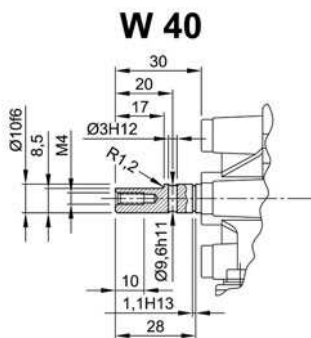
### Motor picture



### Characteristic curves



### Output shaft drawing (W), Wiring diagrams (S) and Connector layout (K)





# NIDEC MOTORS & ACTUATORS WORLDWIDE DISTRIBUTORS



**Innovatech Solutions Pty Ltd.**  
19 Northwind Avenue  
2250 Point Clare, NSW  
Australia

Tel. +61 2 43 22 39 62  
Fax +61 2 43 22 39 62  
rkutter@innovatechsolutions.com.au  
www.innovatechsolutions.com.au



**Kwapil Co. GmbH**  
Kammelweg 9  
1210 Wien  
Austria

Tel. +43 12 78 85 85  
Fax +43 12 78 85 86  
verkauf@kwapil.com  
www.kwapil.com



**Eisses Import B.V.**  
Admiraal Trompstraat 11  
3115 HK Schiedam  
Holland

Tel. +31 1 02 46 00 18  
Fax +31 1 02 46 00 19  
info@eissesbv.nl  
www.eissesbv.nl



**Drive Systems Group**  
7150 Torbram Road, No 1 & 2  
L4T 3Z8 Mississauga, ON  
Canada

Tel. +1 90 54 05 03 10  
Fax +1 90 54 05 03 13  
georger@drivesystemsgroup.com  
www.drivesystemsgroup.com



**Opis Engineering k.s.**  
Selská 64  
61400 Brno-Malomerice  
Czech Republic

Tel. +42 05 43 33 00 55  
Fax +42 05 43 24 26 53  
cada@opis.cz  
www.opis.cz



**Bondy - LMT A&S**  
Grundtvigsalle 168  
6400 Sonderborg  
Denmark

Tel. +45 74 43 18 80  
Fax +45 74 43 18 81  
ej@lmttransmission.dk  
www.lmttransmission.dk



**Oy Movetec AB**  
Hannuksentie 1  
02270 Espoo  
Finland

Tel. +35 89 52 59 23 0  
Fax +35 89 52 59 23 33  
pasi.nyberg@movetec.fi  
www.movetec.fi



**Comotech Industries**  
6 rue des Blonnières  
BP 82441 Haute Goulaine  
44124 - VERTOU, France

Tel. +33 2 40 05 05 05  
Fax +33 2 40 05 05 03  
thierry.berthou@comotech.fr  
www.comotech.fr



**101 automation GmbH**  
Schallbruch 19-21  
42781 Haan  
Germany

Tel. +49 21 29 37 63 50  
Fax +49 21 29 37 63 59  
info@101automation.de  
www.101automation.de



**JBW GmbH**  
Bodenseestrasse 228  
81243 München  
Germany

Tel. +49 89 89 70 10 33  
Fax +49 89 89 70 10 00  
info@elektromotore.eu  
www.elektromotore.eu



**Ott GmbH & Co. KG**  
Baarstrasse 3  
78652 Deislingen  
Germany

Tel. +49 74 20 93 99 0  
Fax +49 74 20 93 99 25  
info@ott-antriebe.de  
www.ott-antriebe.de



**Wald Antriebe GmbH**  
Hanns-Hoerbiger-Strasse 1  
29664 Walsrode  
Germany

Tel. +49 51 61 60 37 07  
Fax +49 51 61 60 37 08  
info@waldantriebe.de  
www.waldantriebe.de



**Electro Mechanical Systems Ltd**  
Eros House, Calleva Park, Aldermaston  
Reading RG7 8LN  
Great Britain

Tel. +44 11 89 81 73 91  
Fax +44 11 89 81 76 13  
pboughey@ems-ltd.com  
www.ems-limited.co.uk



**Eisses Import B.V.**  
Admiraal Trompstraat 11  
3115 HK Schiedam  
Holland

Tel. +31 1 02 46 00 18  
Fax +31 1 02 46 00 19  
info@eissesbv.nl  
www.eissesbv.nl



**Strategi Automation Solutions Pvt Ltd**  
Plot 25/B, Dodannakundi Indl Estate,  
560048 Bangalore  
India

Tel. +91 80 41 16 31 36/7  
Fax +91 80 41 16 30 47  
arun@strategiautomation.com  
www.strategiautomation.com



**Mechatronics Ltd.**  
P.O. Box 3818  
49130 Petach-Tikva  
Israel

Tel. +97 2 39 28 88 88  
Fax +97 2 39 28 88 80  
office@mechatronics.co.il  
www.mechatronics.co.il



**Motech s.r.l.**  
Via delle Nazioni, 87  
41100 Modena  
Italy

Tel. +39 59 45 42 96  
Fax +39 59 45 16 93  
m.coda@motech-italia.com  
www.motech-italia.com



**Nidec-Shimpo Corp**  
1 Terada Kohtari, Nagaokakyo City  
617-0833 Kyoto  
Japan

Tel. +81 7 59 58 38 86  
Fax +81 7 59 58 36 48  
shinichi.takahashi@nidec-shimpo.co.jp  
www.nidec-shimpo.co.jp



**Eisses Import B.V.**  
Admiraal Trompstraat 11  
3115 HK Schiedam  
Holland

Tel. +31 1 02 46 00 18  
Fax +31 1 02 46 00 19  
info@eissesbv.nl  
www.eissesbv.nl



**Aratron AS**  
Bjornerudveien 17  
1266 Oslo  
Norway

Tel. +47 23 19 16 60  
Fax +47 23 19 16 61  
christer@aratron.no  
www.aratron.no



**Opis Engineering, s.r.o**  
Lucna 476  
03202 Zavazna Poruba  
Slovakia

Tel. +42 14 45 54 72 34  
Fax +42 14 45 54 72 34  
opis@opis.sk  
www.opis.sk



**Motech Iberica**  
Avda. de Las Cortes Valencianas, 41, 1º G  
46015 Valencia  
Spain

Tel. +34 9 63 45 54 05  
Fax +34 9 63 46 59 31  
jnavarro@motech.es  
www.motech.es



**KG Knutsson AB**  
Hammarbacken 8  
19181 Sollentuna  
Sweden

Tel. +46 8 92 30 20  
Fax +46 8 92 33 66  
dan.kimblad@kgk.se  
www.kgk.se



**Antrimon AG**  
Luzernerstrasse 91  
5630 Muri (AG)  
Switzerland

Tel. +41 5 66 75 40 30  
Fax +41 5 66 75 40 31  
info@antrimon.ch  
www.antrimon.ch



**S-MIKRON LTD. ŞTİ.**  
Nilüfer Ticaret Merkezi 66. Sokak No:8  
16110 Nilüfer-BURSA  
Turkey

Tel. +90 22 44 43 52 33 (Pbx)  
Fax +90 22 44 43 52 42  
info@s-mikron.com.tr  
www.s-mikron.com.tr



**Burns Controls Comp.**  
13735 Beta Road  
Dallas TX 75244  
USA

Tel. +1 97 22 33 67 12  
Fax +1 97 22 33 80 39  
burns@burnscontrols.com  
www.burnscontrols.com



**Power Electric**  
15300 25th Ave North, Suite 400  
Plymouth MN 55447  
USA

Tel. +1 76 35 53 10 90  
Fax +1 76 35 53 12 42  
nbohn@powerelectric.com  
www.powerelectric.com