

SWMV

Als 12 V und 24 V Motor mit Entstörung und Hall-Sensoren



Technische Beschreibung

Motorgehäuse

Magnetfeld

Getriebeart

Getriebegehäuse

Zahnradmaterial

Getriebebeschmierung

Schnittstelle mechanisch

Schnittstelle elektrisch

Sensor

Thermoschutz

Entstörung

Stahlblech tiefgezogen & korrosionsgeschützt

Permanentmagnet

Schneckenradgetriebe

Zinkdruckguss

KST, Hartgewebe, Metall

Fett, Dauerschmierung

Antriebswelle

Stecker oder Litzen mit

Stecker oder Litzen verzinkt

–

optional

optional

Anwendungen

Industrie

Allgemeiner Maschinenbau, Automaten, Landwirtschaftstechnik, Büromaschinen, Laborgeräte, Medizintechnik, Foto/Optik, Reinigungsgeräte, Druckmaschinen

Design Data	
Commutation	Brushed
Direction of rotation	Bi-directional
Bearing type	A: Ball - B: Sleeve

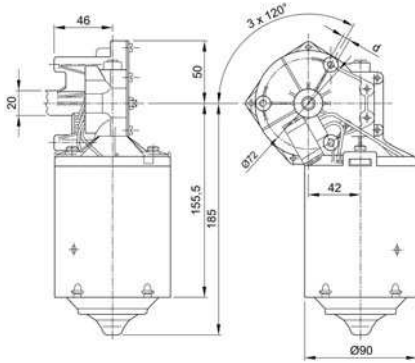
Performance data		
Rated voltage [V]	U_N	24
Nominal torque [Nm]	M_N	6.00
No-load speed [min^{-1}]	n_0	67.0
Nominal power [W]	P_N	38.5
Nominal current [A]	I_N	5.0
Nominal force [kN]	F_N	0.00
Duty cycle		s1

Sensor data	
Pulses	0
Output channels	0

Other data	
Gear ratio	46/1
Gear wheel material	Bronze
Suppression components	
Enclosure class	IP20
Weight [kg]	2.900

Remarks:

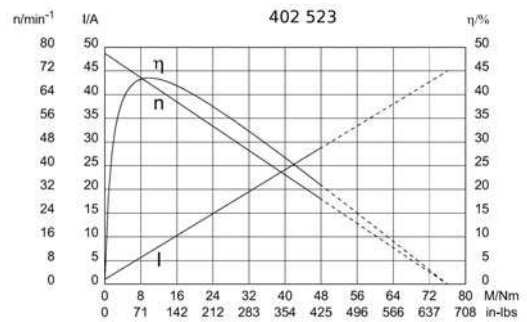
0291 AL



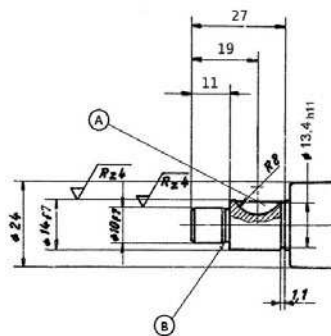
Motor picture



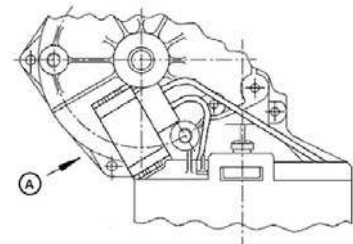
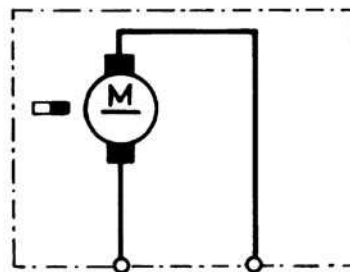
Characteristic curves



Output shaft drawing (W), Wiring diagrams (S) and Connector layout (K)



S 28



A: keyway 5 - P9 width tolerance
 B: undercut E 0.6 x 0.2 to DIN 509

A: spade ends 6.3 x 0.8 (according to DIN 46 244)

Design Data	
Commutation	Brushed
Direction of rotation	Bi-directional
Bearing type	A:Ball - B:Sleeve

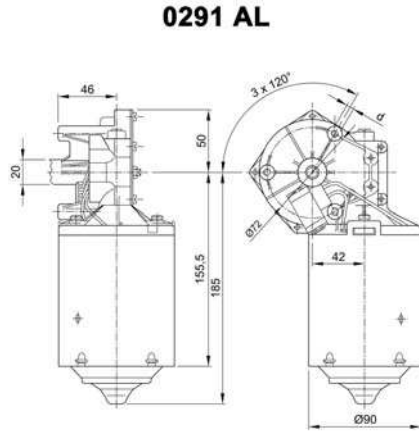
Performance data		
Rated voltage [V]	U_N	24
Nominal torque [Nm]	M_N	8.00
No-load speed [min^{-1}]	n_0	78.0
Nominal power [W]	P_N	58.5
Nominal current [A]	I_N	6.0
Nominal force [kN]	F_N	0.00
Duty cycle	s1	

Sensor data	
Pulses	0
Output channels	0

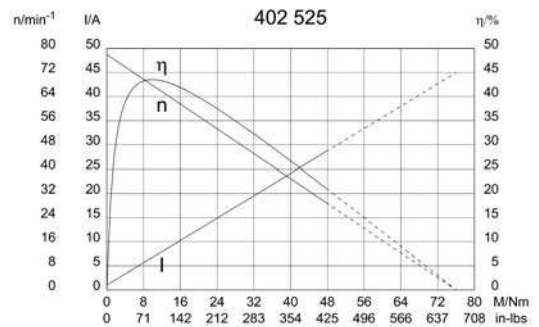
Other data	
Gear ratio	46/1
Gear wheel material	Resinbonded fabric
Suppression components	
Enclosure class	IP 20
Weight [kg]	2.900

Remarks: d = M6x16mm

Characteristic curves

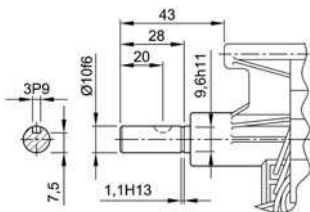


Motor picture

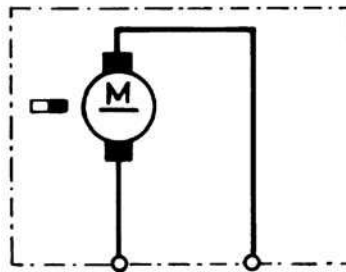


Output shaft drawing (W), Wiring diagrams (S) and Connector layout (K)

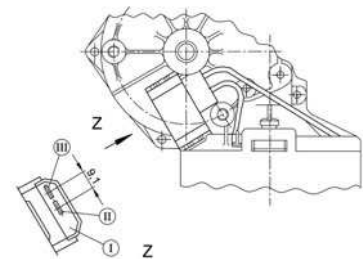
W 278



S 28



K 243

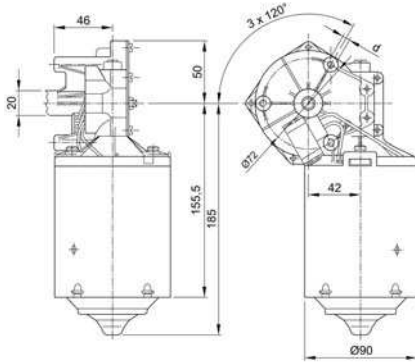


Flat plug 6,8x0,8 DIN 46244 mating with receptacle for tabs and connector housing 163 006-1, drwg C163006, www.tycoelectronics.com

Design Data	
Commutation	Brushed
Direction of rotation	Bi-directional
Bearing type	A:Ball - B:Sleeve

Performance data		
Rated voltage [V]	U_N	12
Nominal torque [Nm]	M_N	6.00
No-load speed [min^{-1}]	n_0	52.0
Nominal power [W]	P_N	29.7
Nominal current [A]	I_N	6.0
Nominal force [kN]	F_N	0.00
Duty cycle	s1	

0291 AL



Sensor data	
Pulses	0
Output channels	0

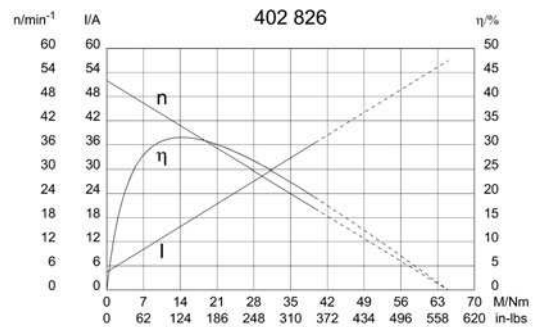
Other data	
Gear ratio	59/1
Gear wheel material	Resinbonded fabric
Suppression components	
Enclosure class	IP 20
Weight [kg]	2.900

Remarks: d = M6x16mm

Motor picture

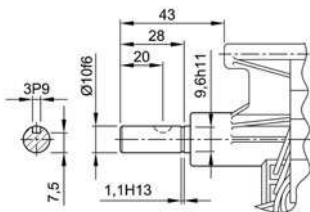


Characteristic curves

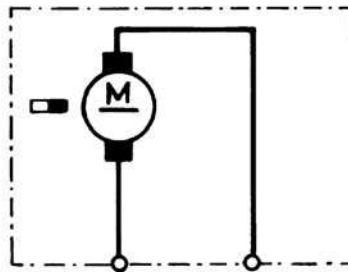


Output shaft drawing (W), Wiring diagrams (S) and Connector layout (K)

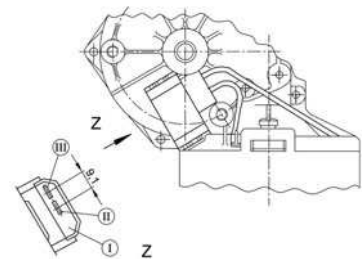
W 278



S 28



K 243



Flat plug 6,8x0,8 DIN 46244 mating with receptacle for tabs and connector housing 163 006-1, drwg C163006, www.tycoelectronics.com

Design Data	
Commutation	Brushed
Direction of rotation	Bi-directional
Bearing type	A: Ball - B: Sleeve

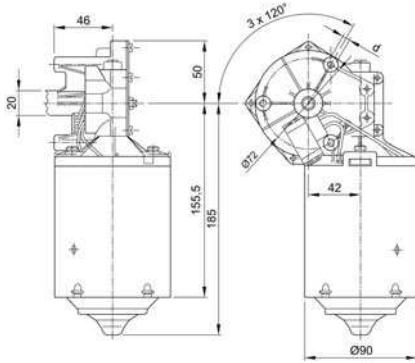
Performance data		
Rated voltage [V]	U_N	24
Nominal torque [Nm]	M_N	8.00
No-load speed [min^{-1}]	n_0	47.0
Nominal power [W]	P_N	34.9
Nominal current [A]	I_N	11.0
Nominal force [kN]	F_N	0.00
Duty cycle	s1	

Sensor data	
Pulses	0
Output channels	0

Other data	
Gear ratio	59/1
Gear wheel material	Bronze
Suppression components	5.0 μ H
Enclosure class	IP20
Weight [kg]	2.900

Remarks:

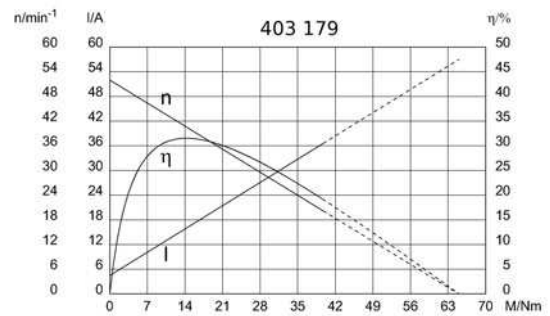
0291 AL



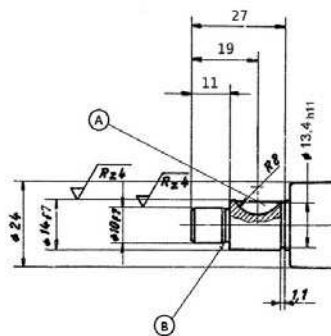
Motor picture



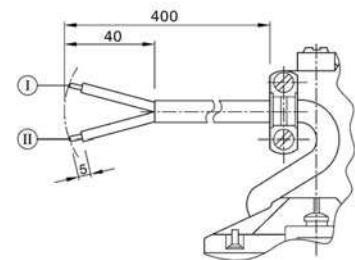
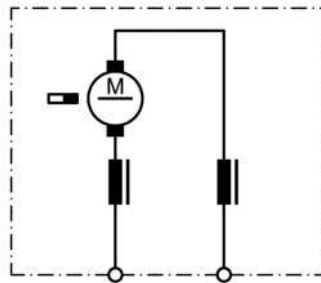
Characteristic curves



Output shaft drawing (W), Wiring diagrams (S) and Connector layout (K)



S 27



A: keyway 5 - P9 width tolerance
 B: undercut E 0.6 x 0.2 to DIN 509

I: red
 II: green

Design Data	
Commutation	Brushed
Direction of rotation	Bi-directional
Bearing type	A:Ball - B:Sleeve

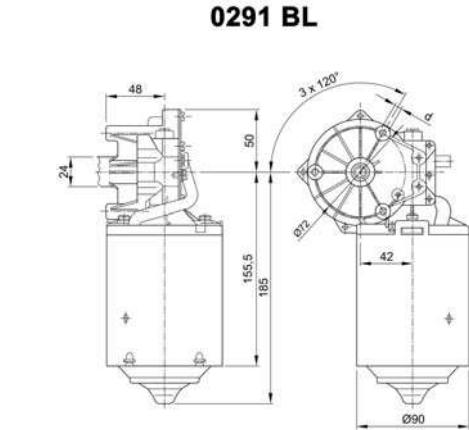
Performance data		
Rated voltage [V]	U_N	24
Nominal torque [Nm]	M_N	3.00
No-load speed [min^{-1}]	n_0	220.0
Nominal power [W]	P_N	65.7
Nominal current [A]	I_N	8.0
Nominal force [kN]	F_N	0.00
Duty cycle		s1

Sensor data	
Pulses	0
Output channels	0

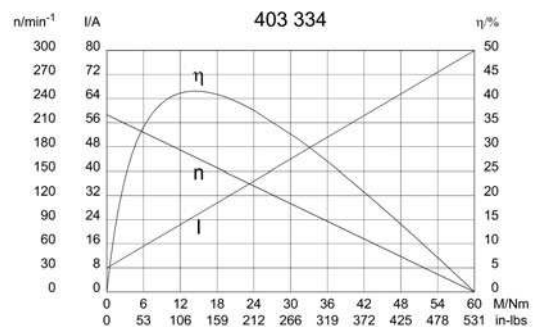
Other data	
Gear ratio	44/2
Gear wheel material	plastic
Suppression components	6,5 μ H, 1nF
Enclosure class	IP 20
Weight [kg]	2.900

Remarks: d = M8 x 16 mm

Characteristic curves

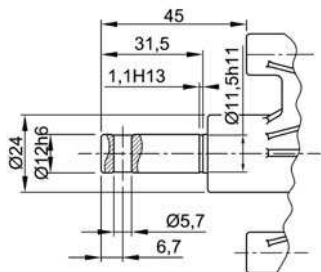


Motor picture

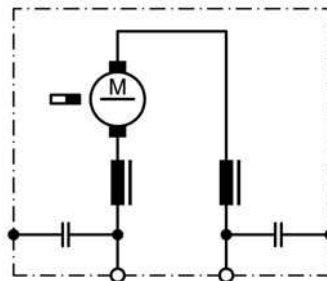


Output shaft drawing (W), Wiring diagrams (S) and Connector layout (K)

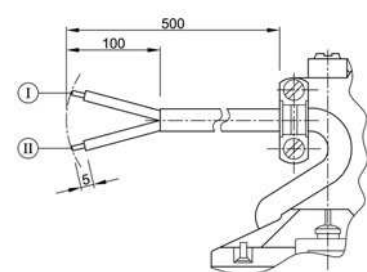
W 070



S 30



K 274

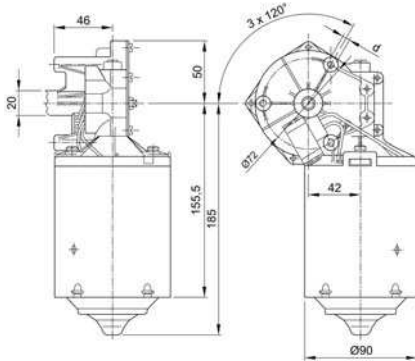


I red
II green

Design Data	
Commutation	Brushed
Direction of rotation	Bi-directional
Bearing type	A:Ball - B:Sleeve

Performance data		
Rated voltage [V]	U_N	24
Nominal torque [Nm]	M_N	5.00
No-load speed [min^{-1}]	n_0	52.0
Nominal power [W]	P_N	25.7
Nominal current [A]	I_N	5.0
Nominal force [kN]	F_N	0.00
Duty cycle		s1

0291 AL



Sensor data	
Pulses	0
Output channels	0

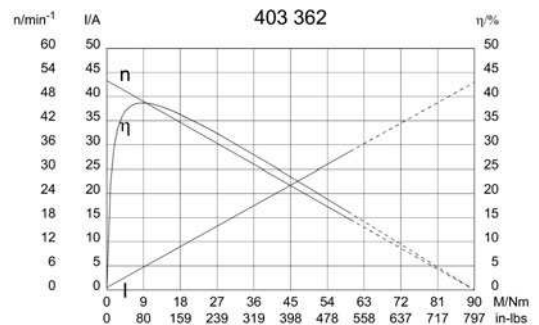
Other data	
Gear ratio	59/1
Gear wheel material	Resinbonded fabric
Suppression components	
Enclosure class	IP 20
Weight [kg]	2.900

Remarks: d = M8 x 23mm

Motor picture

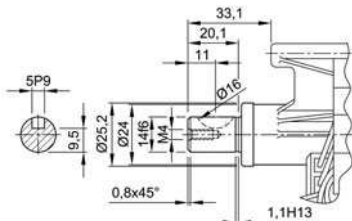


Characteristic curves

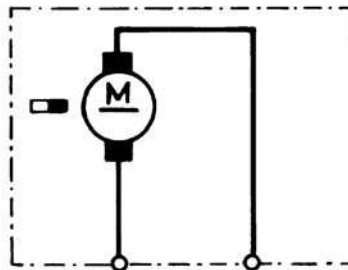


Output shaft drawing (W), Wiring diagrams (S) and Connector layout (K)

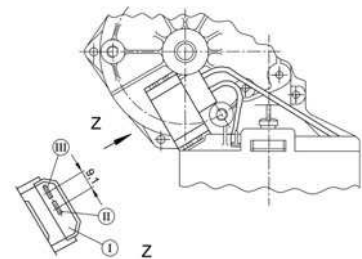
W 126



S 28



K 243

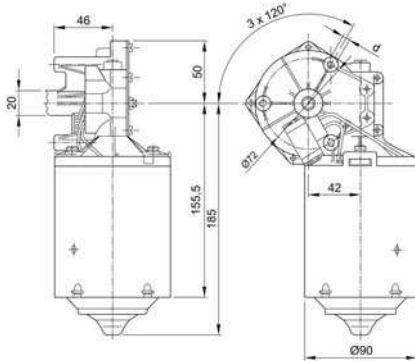


Flat plug 6,8x0,8 DIN 46244 mating with receptacle for tabs and connector housing 163 006-1, drwg C163006, www.tycoelectronics.com

Design Data	
Commutation	Brushed
Direction of rotation	Bi-directional
Bearing type	A:Ball - B:Sleeve

Performance data		
Rated voltage [V]	U_N	24
Nominal torque [Nm]	M_N	8.00
No-load speed [min^{-1}]	n_0	48.0
Nominal power [W]	P_N	36.0
Nominal current [A]	I_N	7.0
Nominal force [kN]	F_N	0.00
Duty cycle		s1

0291 AL



Sensor data	
Pulses	0
Output channels	0

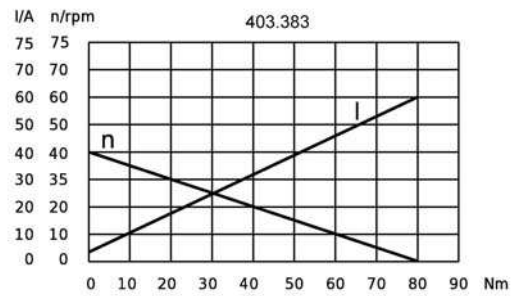
Other data	
Gear ratio	46/1
Gear wheel material	bronze
Suppression components	
Enclosure class	IP20
Weight [kg]	2.900

Remarks: d=M8x23

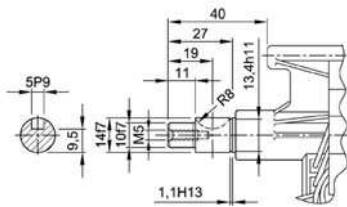
Motor picture



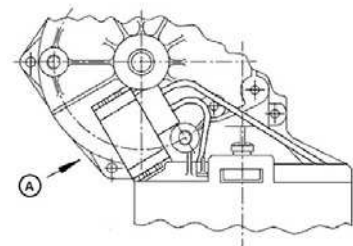
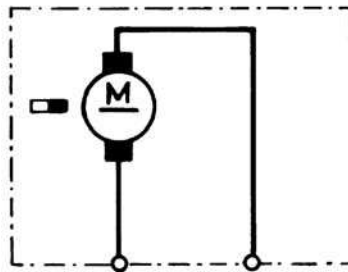
Characteristic curves



Output shaft drawing (W), Wiring diagrams (S) and Connector layout (K)



S 28



A: spade ends 6.3 x 0.8 (according to DIN 46 244)

NIDEC MOTORS & ACTUATORS WORLDWIDE DISTRIBUTORS



Innovatech Solutions Pty Ltd.
19 Northwind Avenue
2250 Point Clare, NSW
Australia

Tel. +61 2 43 22 39 62
Fax +61 2 43 22 39 62
rkutter@innovatechsolutions.com.au
www.innovatechsolutions.com.au



Kwapil Co. GmbH
Kammelweg 9
1210 Wien
Austria

Tel. +43 12 78 85 85
Fax +43 12 78 85 86
verkauf@kwapil.com
www.kwapil.com



Eisses Import B.V.
Admiraal Trompstraat 11
3115 HK Schiedam
Holland

Tel. +31 1 02 46 00 18
Fax +31 1 02 46 00 19
info@eissesbv.nl
www.eissesbv.nl



Drive Systems Group
7150 Torbram Road, No 1 & 2
L4T 3Z8 Mississauga, ON
Canada

Tel. +1 90 54 05 03 10
Fax +1 90 54 05 03 13
georger@drivesystemsgroup.com
www.drivesystemsgroup.com



Opis Engineering k.s.
Selská 64
61400 Brno-Malomerice
Czech Republic

Tel. +42 05 43 33 00 55
Fax +42 05 43 24 26 53
cada@opis.cz
www.opis.cz



Bondy - LMT A&S
Grundtvigsalle 168
6400 Sonderborg
Denmark

Tel. +45 74 43 18 80
Fax +45 74 43 18 81
ej@lmttransmission.dk
www.lmttransmission.dk



Oy Movetec AB
Hannuksentie 1
02270 Espoo
Finland

Tel. +35 89 52 59 23 0
Fax +35 89 52 59 23 33
pasi.nyberg@movetec.fi
www.movetec.fi



Comotech Industries
6 rue des Blonnières
BP 82441 Haute Goulaine
44124 - VERTOU, France

Tel. +33 2 40 05 05 05
Fax +33 2 40 05 05 03
thierry.berthou@comotech.fr
www.comotech.fr



101 automation GmbH
Schallbruch 19-21
42781 Haan
Germany

Tel. +49 21 29 37 63 50
Fax +49 21 29 37 63 59
info@101automation.de
www.101automation.de



JBW GmbH
Bodenseestrasse 228
81243 München
Germany

Tel. +49 89 89 70 10 33
Fax +49 89 89 70 10 00
info@elektromotore.eu
www.elektromotore.eu



Ott GmbH & Co. KG
Baarstrasse 3
78652 Deislingen
Germany

Tel. +49 74 20 93 99 0
Fax +49 74 20 93 99 25
info@ott-antriebe.de
www.ott-antriebe.de



Wald Antriebe GmbH
Hanns-Hoerbiger-Strasse 1
29664 Walsrode
Germany

Tel. +49 51 61 60 37 07
Fax +49 51 61 60 37 08
info@waldantriebe.de
www.waldantriebe.de



Electro Mechanical Systems Ltd
Eros House, Calleva Park, Aldermaston
Reading RG7 8LNK
Great Britain

Tel. +44 11 89 81 73 91
Fax +44 11 89 81 76 13
pboughey@ems-ltd.com
www.ems-limited.co.uk



Eisses Import B.V.
Admiraal Trompstraat 11
3115 HK Schiedam
Holland

Tel. +31 1 02 46 00 18
Fax +31 1 02 46 00 19
info@eissesbv.nl
www.eissesbv.nl



Strategi Automation Solutions Pvt Ltd
Plot 25/B, Dodannakundi Indl Estate,
560048 Bangalore
India

Tel. +91 80 41 16 31 36/7
Fax +91 80 41 16 30 47
arun@strategiautomation.com
www.strategiautomation.com



Mechatronics Ltd.
P.O. Box 3818
49130 Petach-Tikva
Israel

Tel. +97 2 39 28 88 88
Fax +97 2 39 28 88 80
office@mechatronics.co.il
www.mechatronics.co.il



Motech s.r.l.
Via delle Nazioni, 87
41100 Modena
Italy

Tel. +39 59 45 42 96
Fax +39 59 45 16 93
m.coda@motech-italia.com
www.motech-italia.com



Nidec-Shimpo Corp
1 Terada Kohtari, Nagaokakyo City
617-0833 Kyoto
Japan

Tel. +81 7 59 58 38 86
Fax +81 7 59 58 36 48
shinichi.takahashi@nidec-shimpo.co.jp
www.nidec-shimpo.co.jp



Eisses Import B.V.
Admiraal Trompstraat 11
3115 HK Schiedam
Holland

Tel. +31 1 02 46 00 18
Fax +31 1 02 46 00 19
info@eissesbv.nl
www.eissesbv.nl



Aratron AS
Bjornerudveien 17
1266 Oslo
Norway

Tel. +47 23 19 16 60
Fax +47 23 19 16 61
christer@aratron.no
www.aratron.no



Opis Engineering, s.r.o
Lucna 476
03202 Zavazna Poruba
Slovakia

Tel. +42 14 45 54 72 34
Fax +42 14 45 54 72 34
opis@opis.sk
www.opis.sk



Motech Iberica
Avda. de Las Cortes Valencianas, 41, 1^oG
46015 Valencia
Spain

Tel. +34 9 63 45 54 05
Fax +34 9 63 46 59 31
jnavarro@motech.es
www.motech.es



KG Knutsson AB
Hammarbacken 8
19181 Sollentuna
Sweden

Tel. +46 8 92 30 20
Fax +46 8 92 33 66
dan.kimblad@kgk.se
www.kgk.se



Antrimon AG
Luzernerstrasse 91
5630 Muri (AG)
Switzerland

Tel. +41 5 66 75 40 30
Fax +41 5 66 75 40 31
info@antrimon.ch
www.antrimon.ch



S-MIKRON LTD. ŞTİ.
Nilüfer Ticaret Merkezi 66. Sokak No:8
16110 Nilüfer-BURSA
Turkey

Tel. +90 22 44 43 52 33 (Pbx)
Fax +90 22 44 43 52 42
info@s-mikron.com.tr
www.s-mikron.com.tr



Burns Controls Comp.
13735 Beta Road
Dallas TX 75244
USA

Tel. +1 97 22 33 67 12
Fax +1 97 22 33 80 39
burns@burnscontrols.com
www.burnscontrols.com



Power Electric
15300 25th Ave North, Suite 400
Plymouth MN 55447
USA

Tel. +1 76 35 53 10 90
Fax +1 76 35 53 12 42
nbohn@powerelectric.com
www.powerelectric.com

