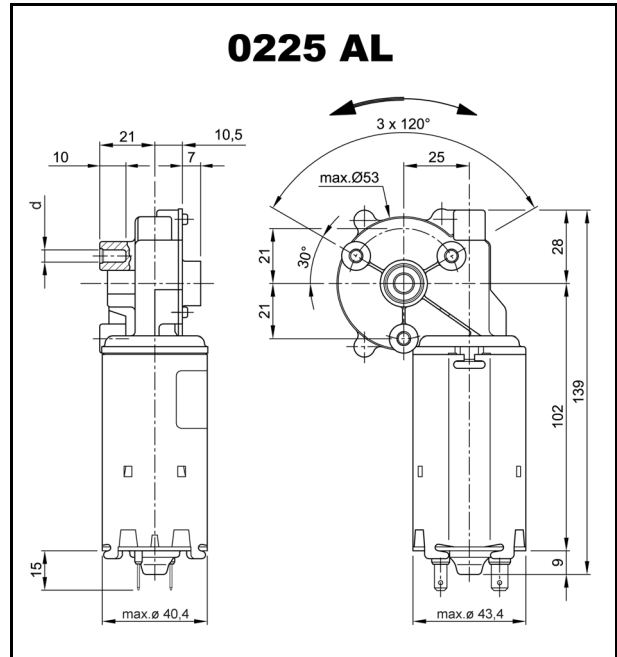
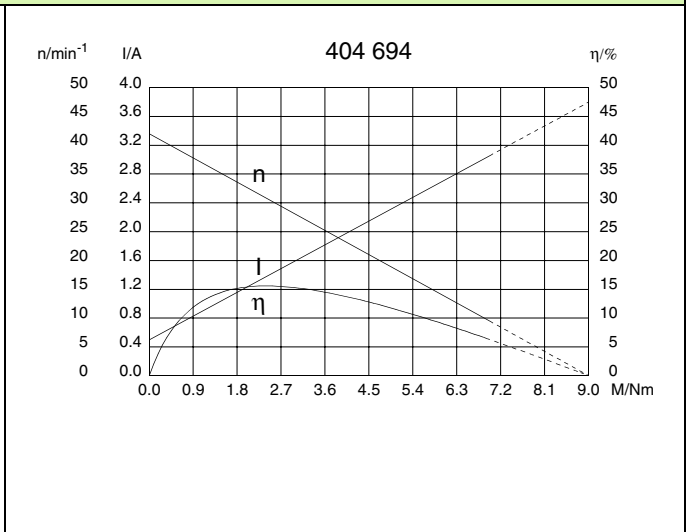


Technical Data

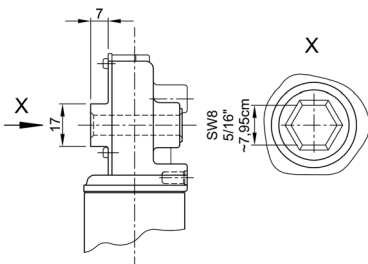
Rated voltage	U_N	[Volt]	36
No-load speed	n_0	[min ⁻¹]	42
Nominal torque	M_N	[Nm]	2,00
ON time	%		10
ON	[min]		
Starting torque	M_A	[Nm]	9,00
Gear ratio	i		72/1
Armature resistance, 2 bars	R	[mΩ]	
4 bars	R	[mΩ]	
Armature inductance, 2 bars	L	[mH]	
4 bars	L	[mH]	
Armature load inertia	J_R	[kgm ²] × 10 ⁻⁶	
Gear wheel material		plastic	
Hall IC			
Pulses/rev. drive shaft			
Output channels			
Remarks	d = for self-tapping screw M 5		
Enclosure class			IP 30
Weight		[kg]	0,710



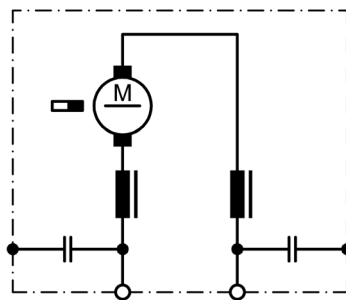
Performance Characteristics



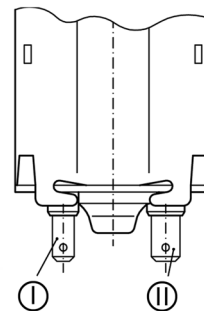
W 229



S 30



K 117



- I Blade terminal ends
4,8 x 0,8 DIN 46 244
- II Blade terminal ends
6,3 x 0,8 DIN 46 244