

Series 0225 (GMPG)

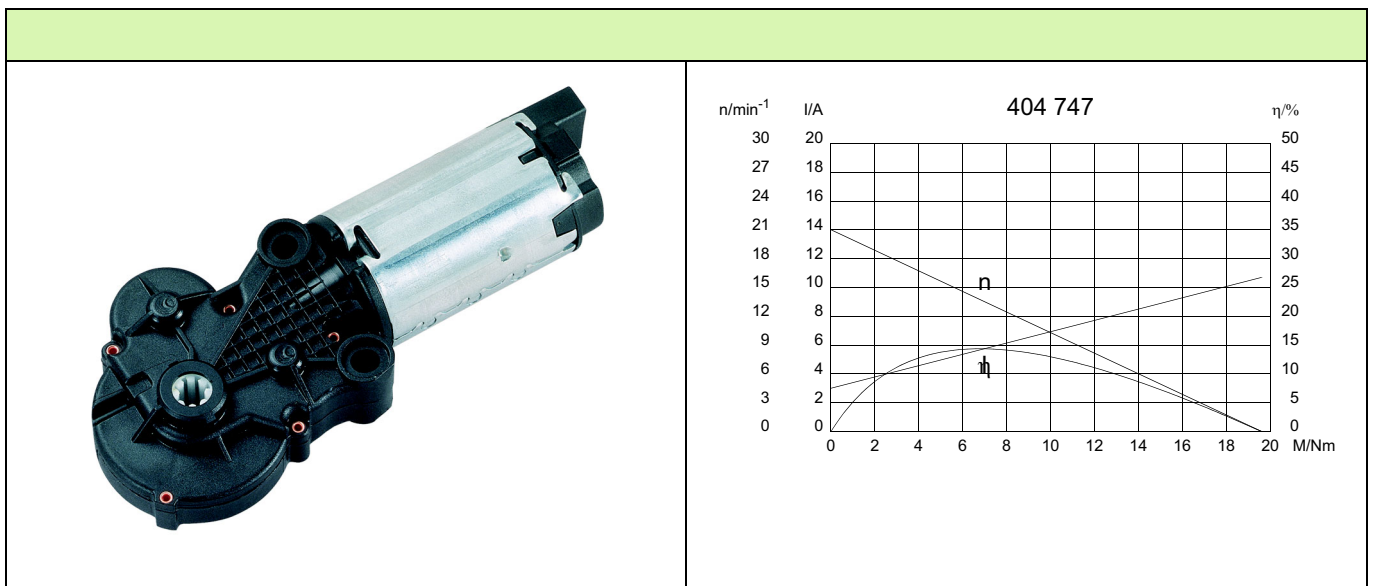
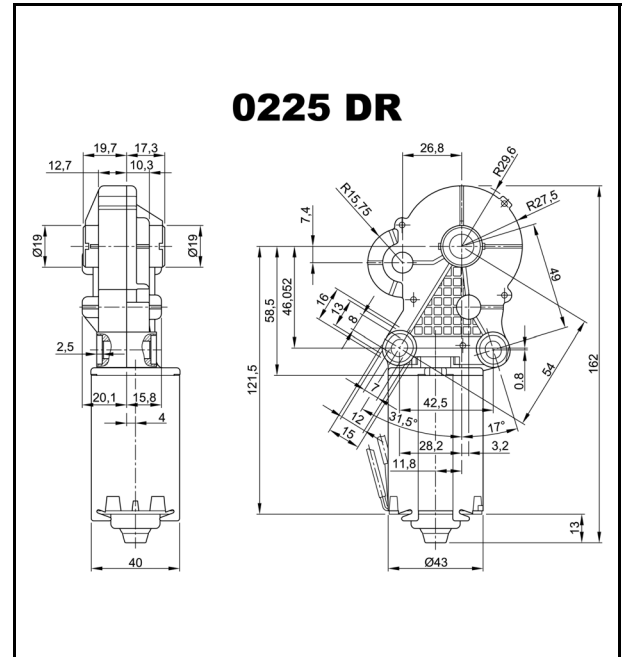
Valeo

MOTORS & ACTUATORS

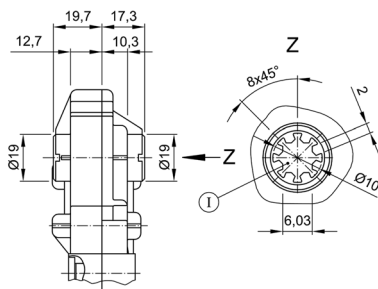
Motor type 404 747

Technical Data

| | | | |
|-----------------------------|-------|--|-----------------|
| Rated voltage | U_N | [Volt] | 12 |
| No-load speed | n_0 | [min ⁻¹] | 21 |
| Nominal torque | M_N | [Nm] | 3,00 |
| ON time | | % | 10 |
| ON | | [min] | |
| Starting torque | M_A | [Nm] | 19,60 |
| Gear ratio | i | | 210/1 |
| Armature resistance, 2 bars | R | [mΩ] | 1110,00 |
| 4 bars | R | [mΩ] | 630,00 |
| Armature inductance, 2 bars | L | [mH] | 0,90 |
| 4 bars | L | [mH] | 0,54 |
| Armature load inertia | J_R | [kgm ²] × 10 ⁻⁶ | 9,50 |
| Gear wheel material | | | plastic |
| Hall IC | | | |
| Pulses/rev. drive shaft | | | |
| Output channels | | | |
| Remarks | | | Plastic gearbox |
| Enclosure class | | | IP 40 |
| Weight | | [kg] | 0,440 |

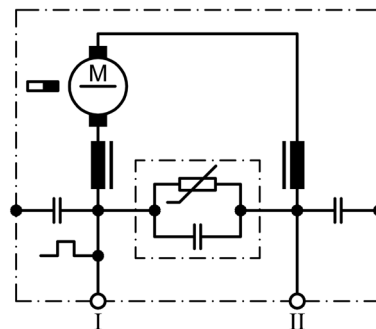


W 270



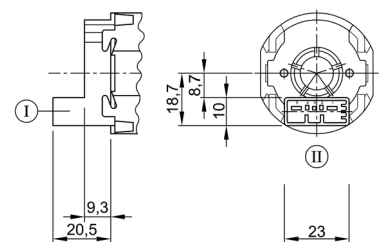
I Profile continuous

S 93



I Terminal 1
II Terminal 5

K 220



I Terminal housing 5-pole
TYCO C-208-15621 (Z)
II Mating connector TYCO 1379217
+ TYCO 1379218