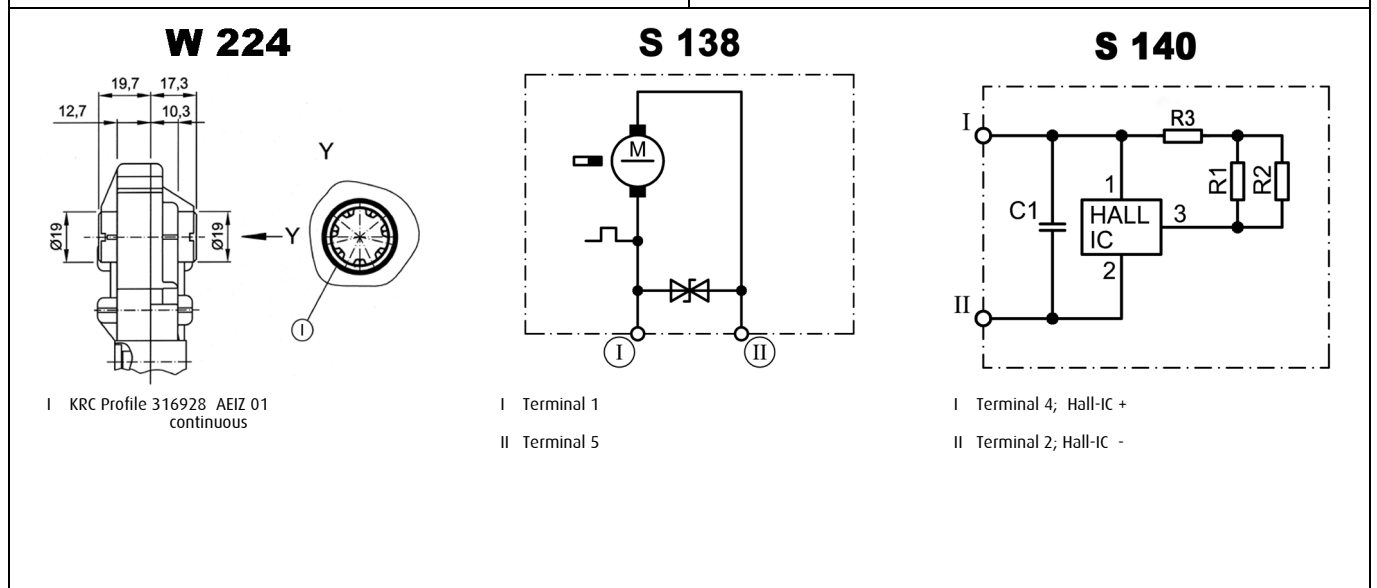
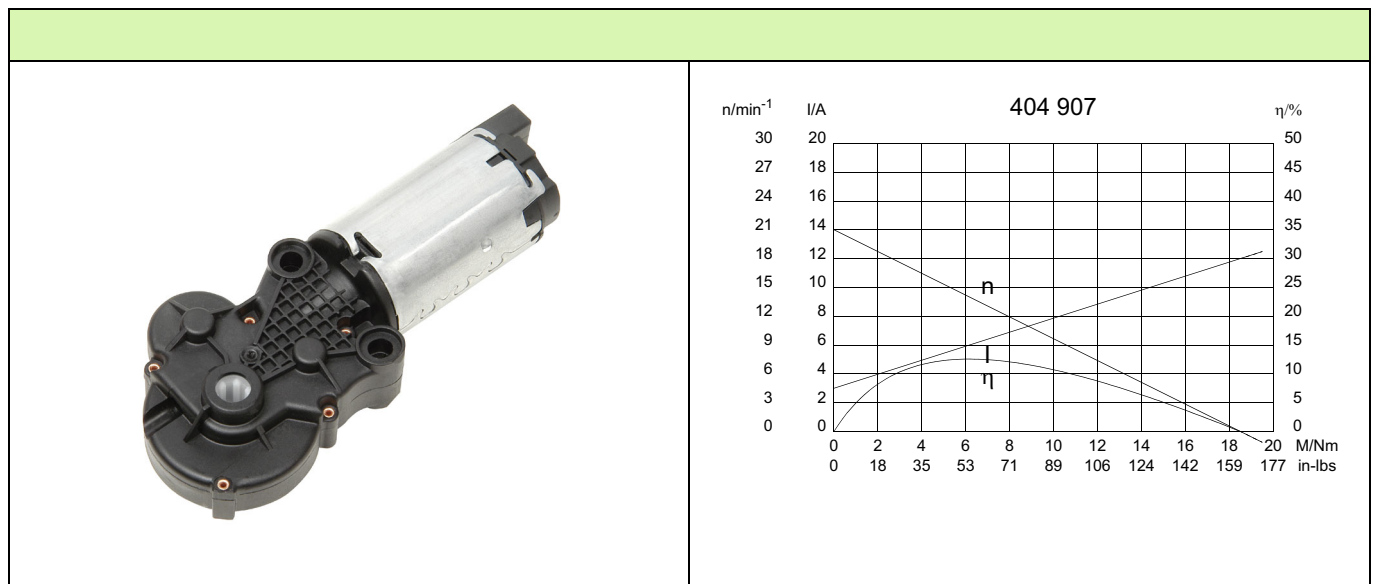
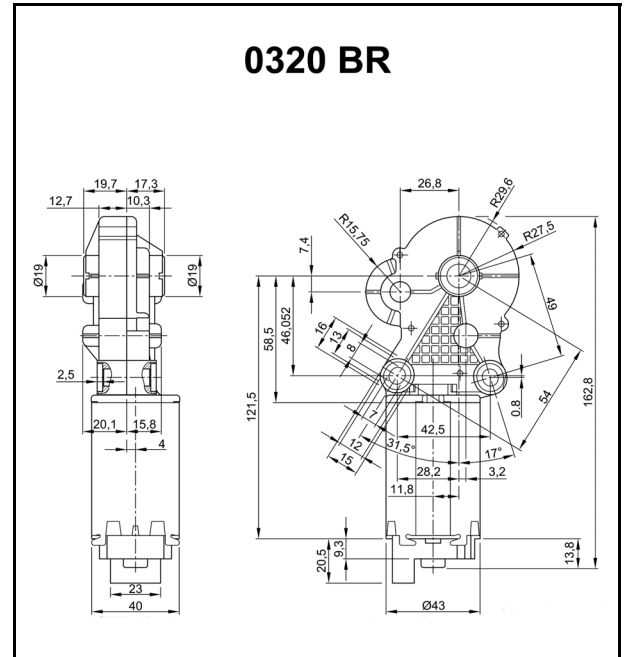


Series 0320 (GMPD)

Motor type 404 907

Technical Data			
Rated voltage	U_N	[Volt]	12
No-load speed	n_0	[min ⁻¹]	21
Nominal torque	M_N	[Nm]	2,00
ON time		%	10
ON		[min]	
Starting torque	M_A	[Nm]	18,50
Gear ratio	i		210/1
Armature resistance,	2 bars	R	[mΩ] 1110,00
	4 bars	R	[mΩ] 630,00
Armature inductance,	2 bars	L	[mH] 0,90
	4 bars	L	[mH] 0,54
Armature load inertia	J_R	[kgm ²] × 10 ⁻⁶	9,50
Gear wheel material			plastic
Hall IC			X
Pulses/rev. drive shaft			210
Output channels			1
Remarks			Plastic gearbox
Enclosure class			IP 40
Weight		[kg]	0,440

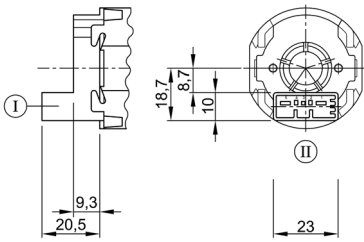


Series 0320 (GMPD)

Motor type 404 907

rs

K 220



- I Terminal housing 5-pole
TYCO C-208-15621 (Z)
- II Mating connector TYCO 1379217-3
+ TYCO 1379218-2

Notes: