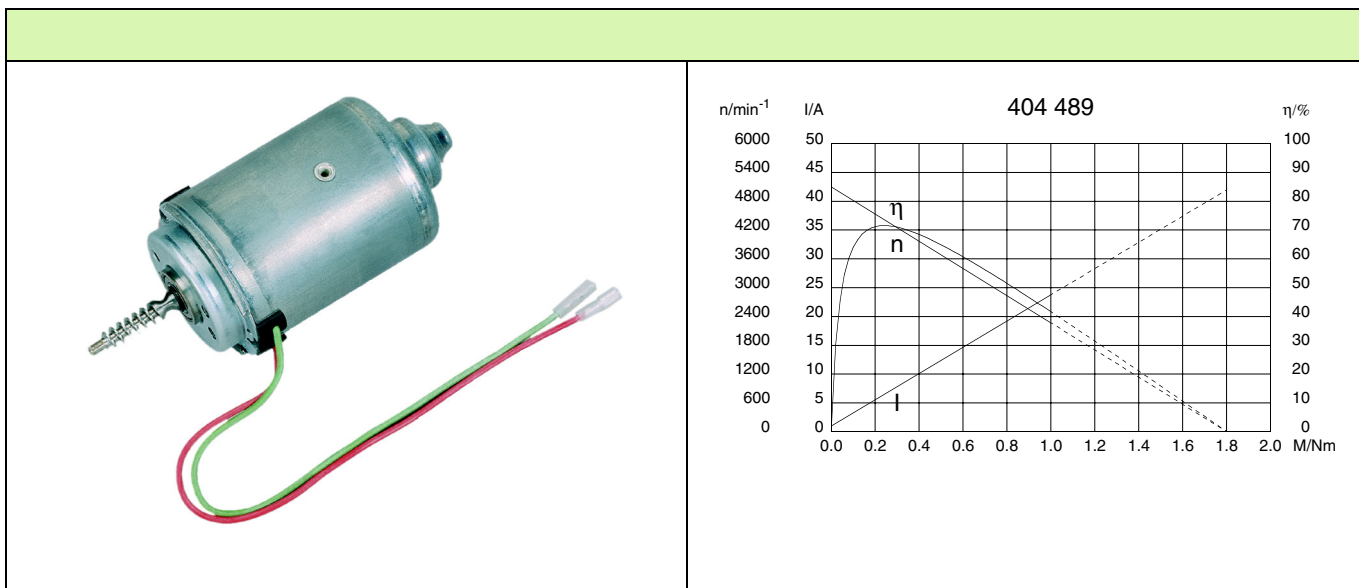
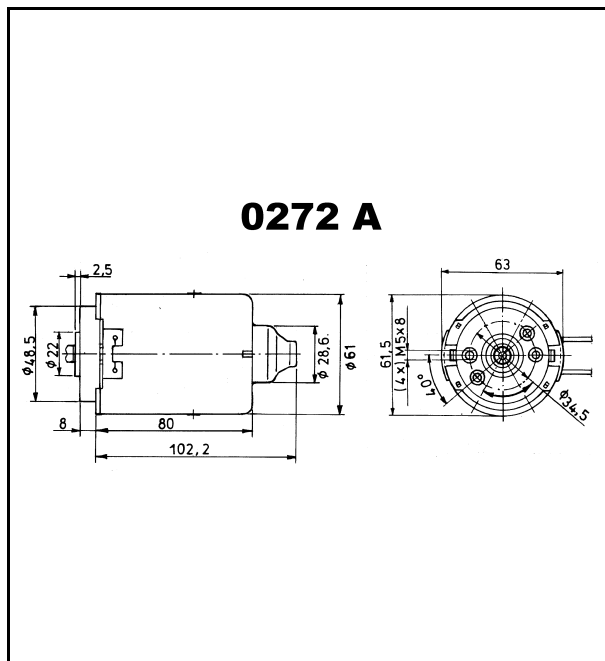
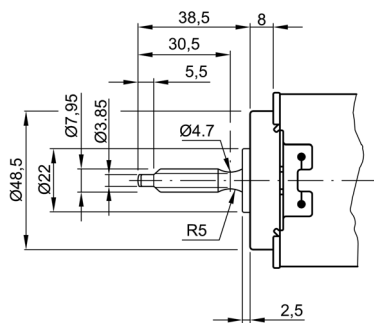


Technical Data

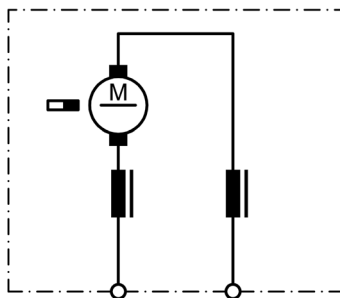
Rated voltage	U_N [Volt]	24
No-load speed	n_0 [min^{-1}]	5100
Nominal torque	M_N [Nm]	0,12
ON time	%	
ON	[min]	
Starting torque	M_A [Nm]	1,80
Gear ratio	i	--
Armature resistance, 2 bars	R [$\text{m}\Omega$]	365,00
4 bars	R [$\text{m}\Omega$]	240,00
Armature inductance, 2 bars	L [mH]	0,85
4 bars	L [mH]	0,80
Armature load inertia	J_R [kgm^2] $\times 10^{-6}$	76,00
Gear wheel material		
Hall IC		
Pulses/rev. drive shaft		
Output channels		
Remarks	1 start worm	
Enclosure class		IP 30
Weight	[kg]	0,880



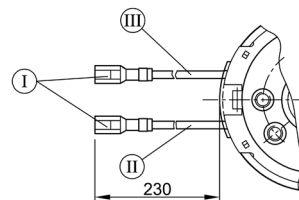
W 220



S 27



K 180



- I Blade terminal receptacles
2,8 x 0,8 DIN 46 247
- II green
- III red